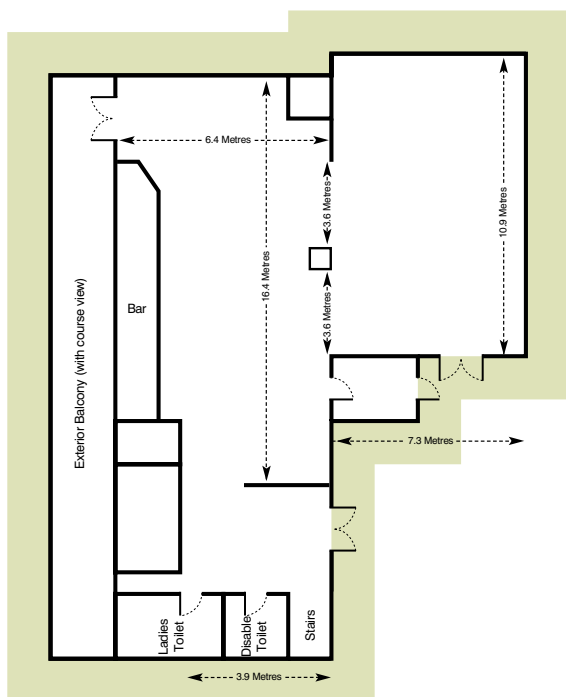


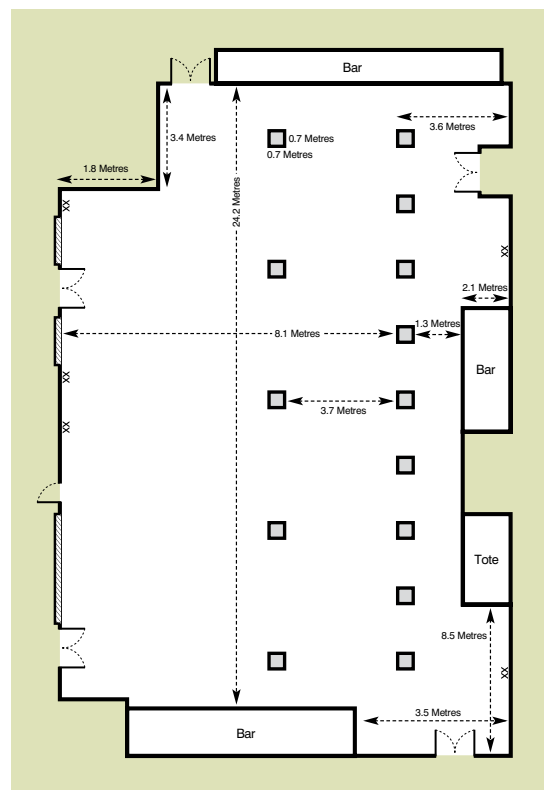
CHEPSTOW

RACING & EVENTS

ROOM PLANS



4 Owners' & Trainers' / Clarkes Restaurant



5 Grandstand & Paddock Bar

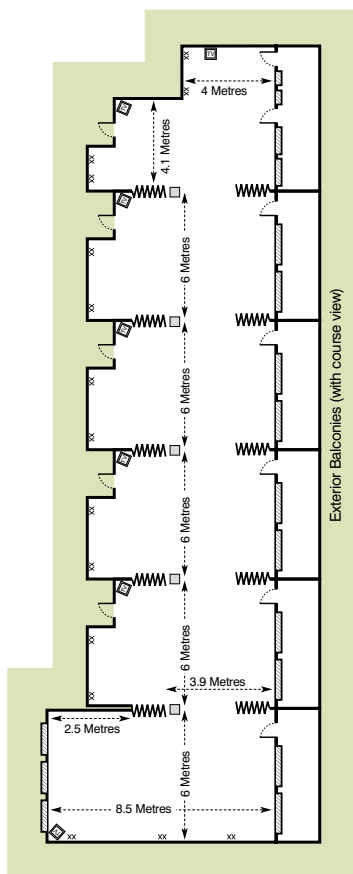
Technical Information

Suite Name	Ceiling Height	Door Width	Door Height	Wheelchair Entry	Lighting	
					Natural	Blackout
4 Owners' & Trainers' / Clarkes Restaurant	2.77m / 2.28m	Double Doors - 2ft 3" per door	2m	✓	✓	✓
5 Grandstand & Paddock Bar	2.71m	Double Doors - 2ft 6" per door	2m	✓	✓	✓

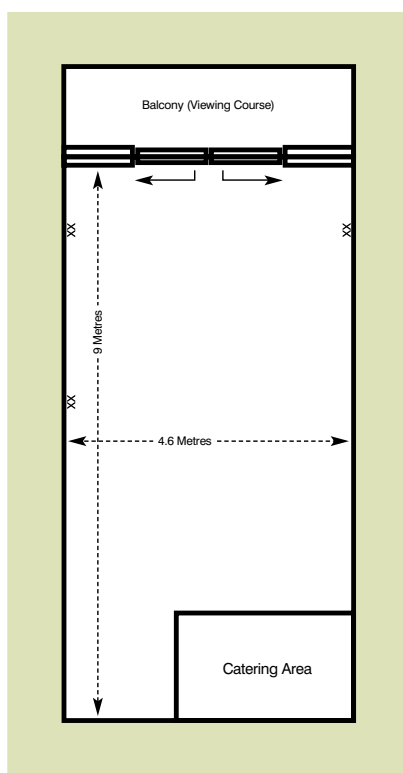
CHEPSTOW

RACING & EVENTS

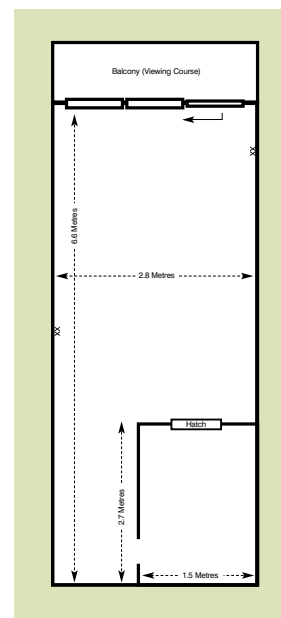
ROOM PLANS



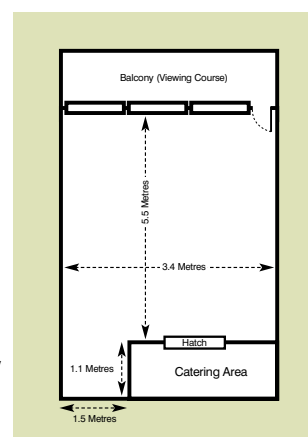
6 Coral Suites A-F



9 Premier Meeting Rooms 1-10



7-8 Premier Meeting Rooms 11-19



10-14 Grandstand & Paddock Box / Meeting Rooms

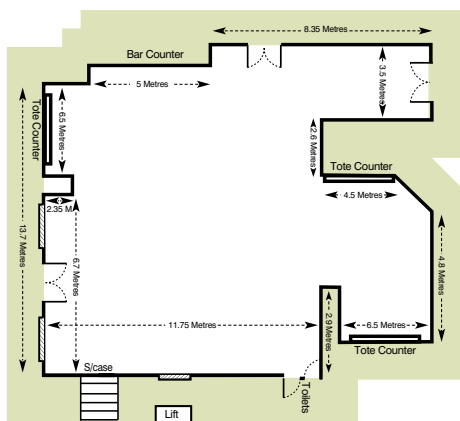
Technical Information

Suite Name	Ceiling Height	Door Width	Door Height	Wheelchair Entry	Lighting	
					Natural	Blackout
6 Suites A - F (opened up)	2.43m	Single Door - 2ft 8"	2m	x	✓	
7 Premier Boxes 1 - 10	2.47m	Single Door - 2ft 9"	2m	✓	✓	
9 Premier Boxes 11 - 19	2.47m	Single Door - 2ft 9"	2m	✓	✓	

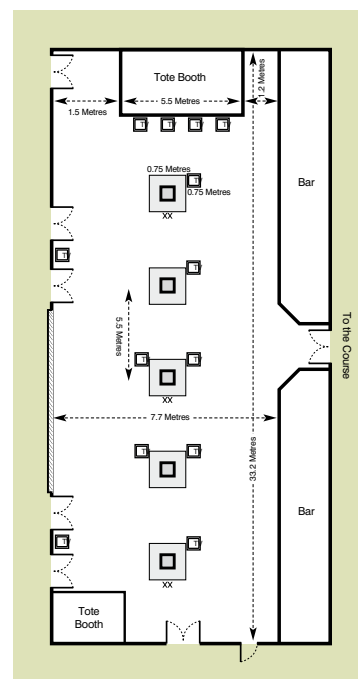
CHEPSTOW

RACING & EVENTS

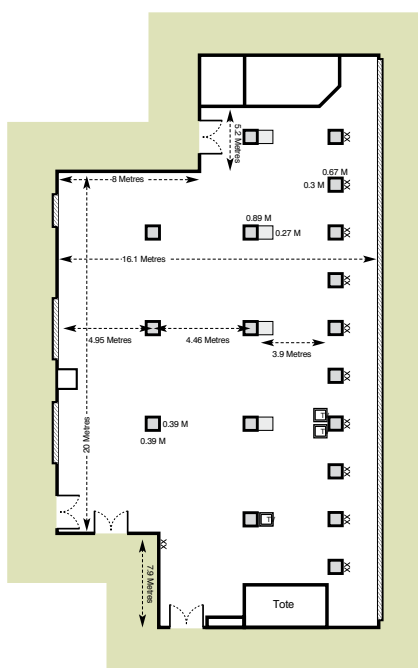
ROOM PLANS



2 Premier Foyer



3 Premier Bar



1 Silks Restaurant

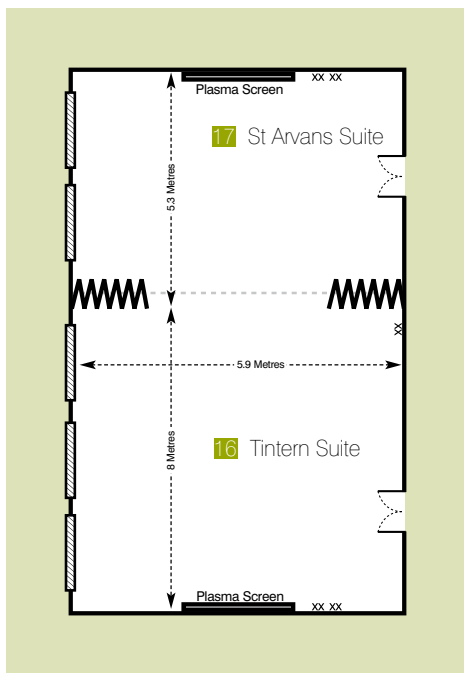
Technical Information

Suite Name	Ceiling Height	Door Width	Door Height	Wheelchair Entry	Lighting Natural	Lighting Blackout	13 Amp Sockets	
1 Silks Restaurant	2.50m	Double Doors - 2ft 2" per door	2m	✓	✓		36	
2 Entrance Foyer	2.62m	Suitable for trade stands & reception						
3 Premier Bar	2.51m	Double Doors - 2ft 9" per door	2m	✓	✓		6	

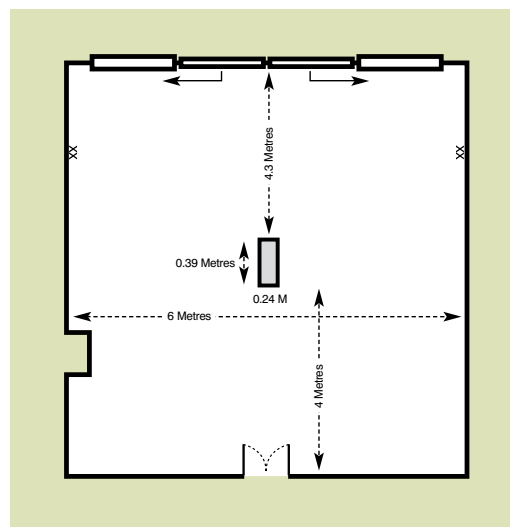
CHEPSTOW

RACING & EVENTS

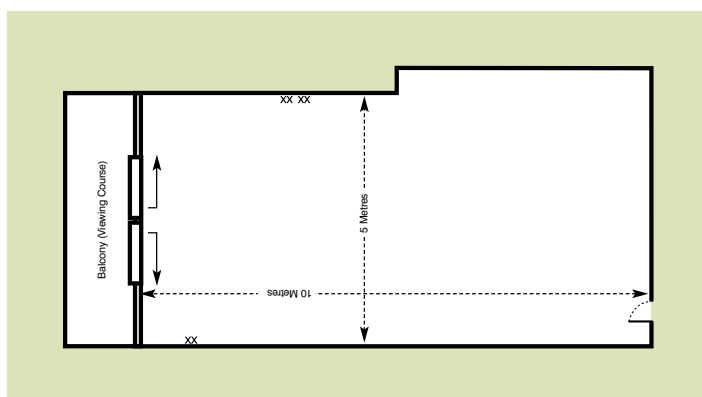
ROOM PLANS



15-17 Tintern Suite / St.Arvens Suite



18 Dream Alliance Suite



19 Piercefield Suite

Technical Information

Suite Name	Ceiling Height	Door Width	Door Height	Wheelchair Entry	Lighting	
					Natural	Blackout
17 Tintern & St Arvens Suite	2.45m	Double Doors - 2ft 3" per door	2m	✓	✓	✓
18 Dream Alliance	2.45m	Double Doors - 2ft 9" per door	2m	✓	✓	✓
19 Piercefield	2.45m	Double Doors - 2ft 9" per door	2m	✓	✓	✓